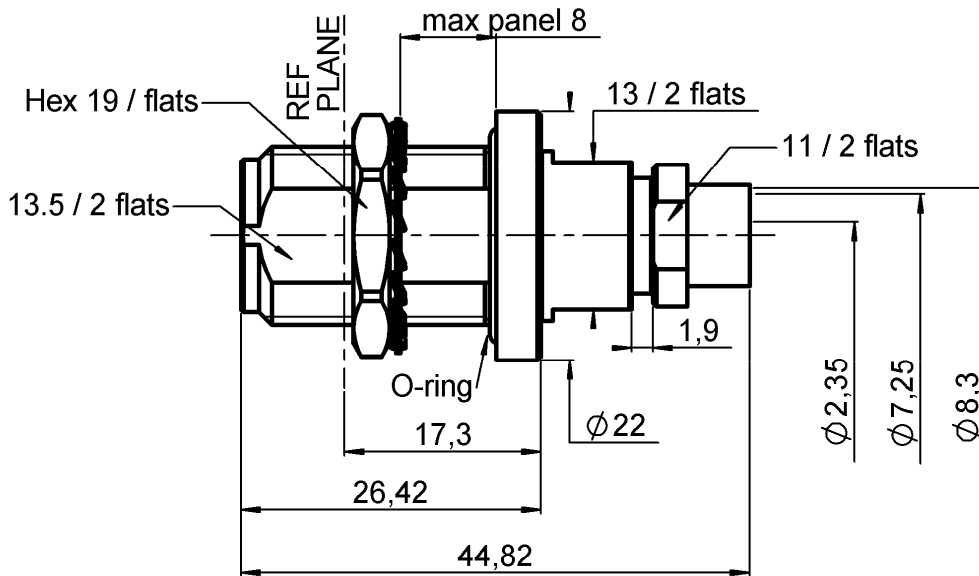


STRAIGHT BULKHEAD JACK PANEL SEAL

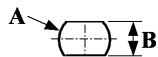
R163.328.L00

SOLDER TYPE CABLE SHF8M/8LI

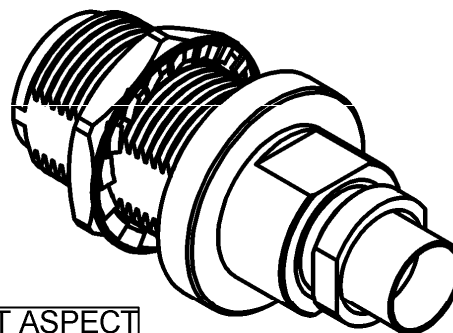
Series : N-18



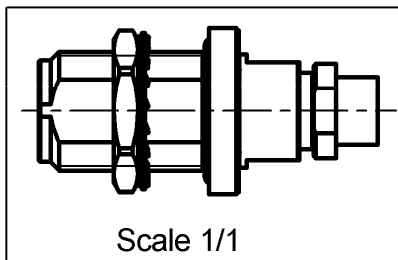
PANEL CUT OUT



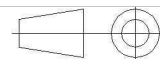
mm		
	Maxi	mini
A	16	15,9
B	13,7	13,6



MAT ASPECT



All dimensions are in mm.



COMPONENTS	MATERIALS	PLATING (µm)
BODY	STAINLESS STEEL (316L)	PASSIVATED
CENTER CONTACT	BERYLLIUM COPPER, BRASS	GOLD 1.3 OVER NICKEL2
OUTER CONTACT	-	-
INSULATOR	PTFE, ULTEM	-
GASKET	FLUOROSILICON	-
OTHERS PARTS	ST. STEEL (316L), BRASS	PASSIVATED GOLD
-	-	-
-	-	-

Issue : 0609 A

In the effort to improve our products, we reserve the right to make changes judged to be necessary.



STRAIGHT BULKHEAD JACK PANEL SEAL

R163.328.L00

SOLDER TYPE CABLE SHF8M/8LI

Series : N-18

PACKAGING

Standard	Unit	Other
1	-	Contact us

SPECIFICATION

ELECTRICAL CHARACTERISTICS

Impedance		50 Ω
Frequency		0-18 GHz
VSWR	1.15 +	0,0000 x F(GHz) Maxi
Insertion loss		0.1 √F(GHz) dB Maxi
RF leakage	- (90 - F(GHz)) dB Maxi
Voltage rating		500 Veff Maxi
Dielectric withstanding voltage		1500 Veff mini
Insulation resistance		5000 MΩ mini

CABLE ASSEMBLY

Stripping	a	b	c	d	e	f
mm	20,0	2,50	0,00	0,00	0,00	0,00

Assembly instruction :

Recommended cable(s)
F1703-160
SHF8LI

MECHANICAL CHARACTERISTICS

Center contact retention		
Axial force – Mating end	27	N mini
Axial force – Opposite end	27	N mini
Torque	NA	N.cm mini

Characteristics indicated on this data sheet are those that can be achieved with the highest performance cable. Intrinsic limitations of the cable may diminish the performance of the assembly

Cable retention

- pull off	*	N mini
- torque	NA	N.cm

TOOLING

Recommended torque		
Mating	NA	N.cm
Panel nut	500	N.cm
Clamp nut	300	N.cm
A/F clamp nut	11,0000	mm

Part Number	Description	Hexagon
.	.	.

OTHER CHARACTERISTICS

Mating life	500	Cycles mini
Weight	47,7660	g

* See the TDS cable assembly

ENVIRONMENTAL

Operating temperature	-65/+165	° C
Hermetic seal	NA	Atm.cm3/s
Panel leakage	IP67	

Issue : 0609 A

In the effort to improve our products, we reserve the right to make changes judged to be necessary.



RADIALL®

STRAIGHT BULKHEAD JACK PANEL SEAL

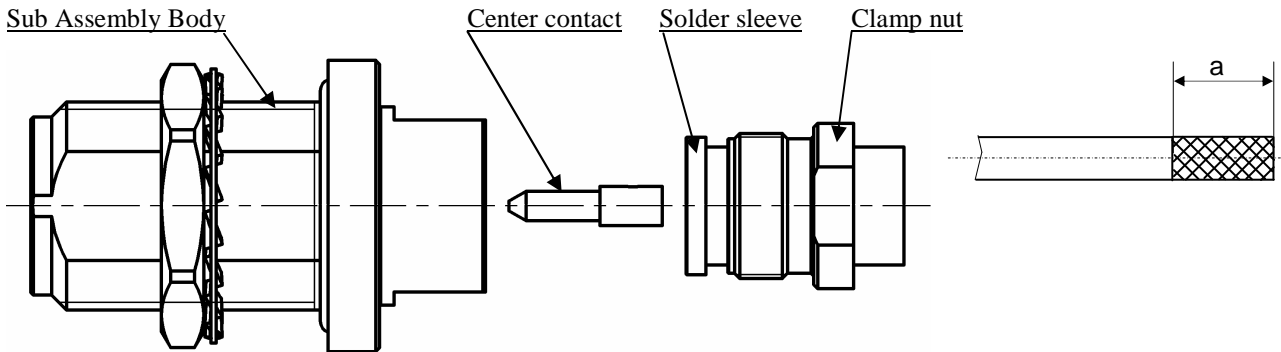
R163.328.L00

SOLDER TYPE CABLE SHF8M/8LI

Series : N-18

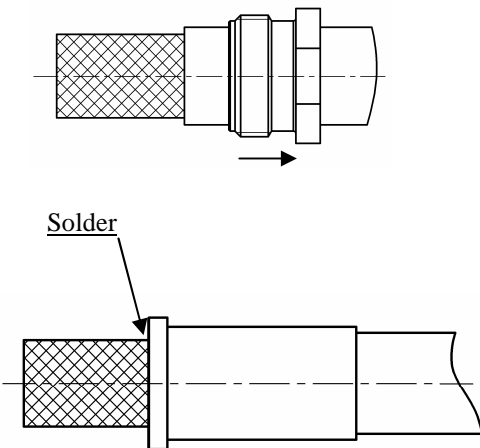
COMPONENTS

STRIPPING DIMENSIONS



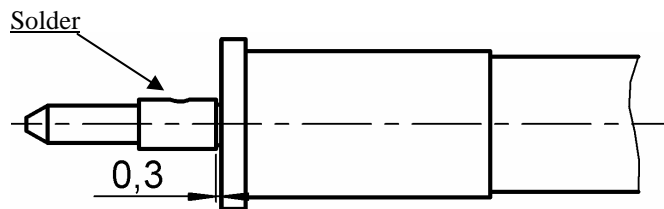
1

Strip the cable.
Slide the clamp nut onto the cable.
Solder the ferrule onto the braid of the cable.



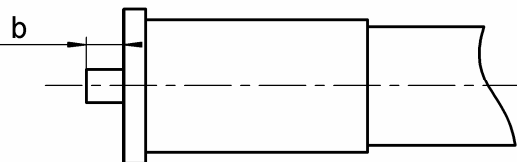
3

Slide the center contact onto the cable inserting between contact and ferrule the area gap.
Solder the contact onto the inner conductor.



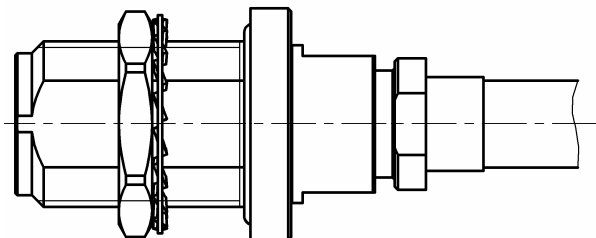
2

Cut the excess of braid and dielectric leveled on the sleeve.



4

Mount the whole body into the main sub assembly and screw the solder sleeve.
(recommended coupling torque 300 N/cm)



Issue : 0609 A

In the effort to improve our products, we reserve the right to make changes judged to be necessary.

